

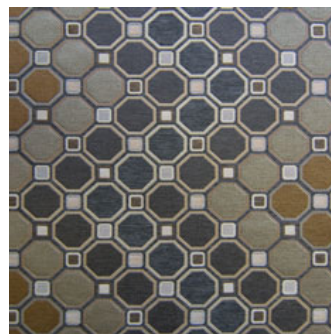
Pedro Ash



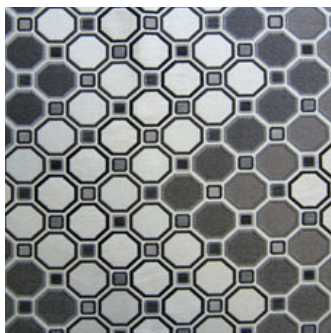
Pedro Beach



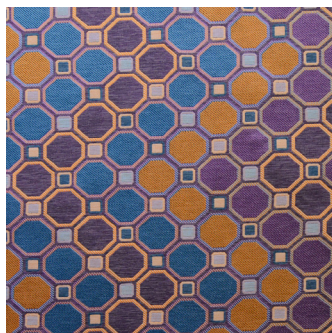
Pedro Breeze



Pedro Crop



Pedro Flint



Pedro Harmony

## PEDRO

### Specifications

Usage	Heavy Commercial
Composition	100% Polyester
Pattern Repeat	V:35cm x H:50cm
Width	140cm
Railroaded	Yes
Care Label	3U
Swish	Yes
Metres on roll (approx.)	45 metres
Price Code	Green

### Test Results

Abrasion resistance - Martindale (ISO 12947)	45,000 cycles
Seam slippage (ISO 13936-2, Load 180)	Warp: 1.2mm, Weft: 1.1mm
Pilling resistance (ISO 12945-2)	4/5
Colourfastness to light (ISO 105-B02, blue std 6)	5/6
Colourfastness to rubbing (ISO 105-X12:1993)	Dry: 4/5, Wet: 4/5
Free and hydrolysed formaldehyde (ISO 14184-1:1998)	Not detectable

Fabric may vary in colour due to the nature of the media